

Rockhall Cottage - The Don Whillans Memorial Hut - The Roaches

OS Map: The White Peak

Grid Ref: SK 007622

Parking in lay-by approximately 400 yards.

Disabled access is not currently easy at this site.

The cottage sleeps a Maximum of 12 people, in 2 first floor rooms reached by a spiral staircase. The 2 bunk rooms sleep 4 and 8 people respectively on alpine style bunks with mattresses. No pillows are provided and you need to bring a sleeping bag.



The cottage has storage heaters that keep the chill off and there is an electric fire in the lounge. **Please ensure the storage heaters are switched on when you leave.** We have installed 2 dehumidifiers to combat the damp. Please leave the kitchen one on at all times. If the one on the staircase disturbs you at night and you turn it off, please switch it on again in the morning.

The kitchen is well equipped with an electric cooker, 2 microwaves, 2 toasters, 2 kettles and 2 fridges. There is a range of pots, pans, crockery, knives, forks, etc. Please ensure you leave the fridges clean and switched on at the end of your stay. Bin bags are provided but **you must remove any rubbish as there is no collection.** Although we aim to provide toilet rolls, washing up liquid and tea towels, we do not get up to the hut every week so you are advised to bring your own supplies. **It is your responsibility to leave the Cottage clean and tidy at the end of your stay.**

The hut gets hit by mice a few times each year. We have bait boxes placed around the hut and this works most of the time. However keep your food in secure containers and make sure you remove anything edible after your stay!

There is a drying room in the cellar, this heats up overnight. Switch the fan on.

At the bottom of the spiral staircase is the washroom. Here there are 2 w.c. cubicles, 2 wash basins and a shower cubicle. There is hot and cold water to both the washroom and kitchen.

You may use the hut from 4pm on your arrival day. Likewise you should vacate the hut by 4pm on your departure date. If you want to arrive early or depart later, please check with the Bookings Secretary.

No dogs, no smoking, no camping and no lighting fires.

Bookings only taken from BMC Members or affiliated clubs. Due to child protection issues, parties intending to bring under 18's must first obtain authorisation to do so from the Booking Secretary. We will have to be satisfied that your child protection procedures are adequate before accepting such a booking. See flowchart at the end of this document.

Charges:

£192 at weekends for Friday & Saturday night. (Whole hut must be booked)

£8.00 per person per night weekdays, individual bookings taken.

We also expect you to book the whole hut for Bank Holidays too (£96 per night).

Bookings:

The Bookings Secretary can give you up to date information on availability. You can also check availability on the internet at:

<http://www.mountain-house.co.uk/hut.html>

The Booking Secretary is best contacted by e mail or phone as second choice.

Mark Stock rockhall@stockies.plus.com 0114 2682337

Deposits and Payment

Deposits are not required as the hut is very popular and can usually be re-let if we are given at least 4 weeks notice. However we expect payment in full at least 4 weeks ahead of the booking! Once a booking has been confirmed it is your responsibility to ensure that you remember to pay on time. A cheque made payable to: The "BMC Whillans" Account should be posted to the Bookings Secretary.

Keyless lock

We now use a press-button combination system so getting in and out is easy for everyone and there are no keys to lose or find. The lock combination is changed regularly and the Booking Secretary will email the details for your party around a week before your booking. If you change your contact details, it is important that you let the Booking Secretary know otherwise you may not receive the correct combination!

Fire Precautions

The hut is equipped with a fire detection system and notices are displayed throughout the hut. Please do not store anything around the stairwell of the spiral staircase. Please do not take any stoves or fuel upstairs into the bedrooms.

Problems whilst at the hut:

During your stay, if any problems arise with the hut that you cannot solve, then any of the following can be contacted:

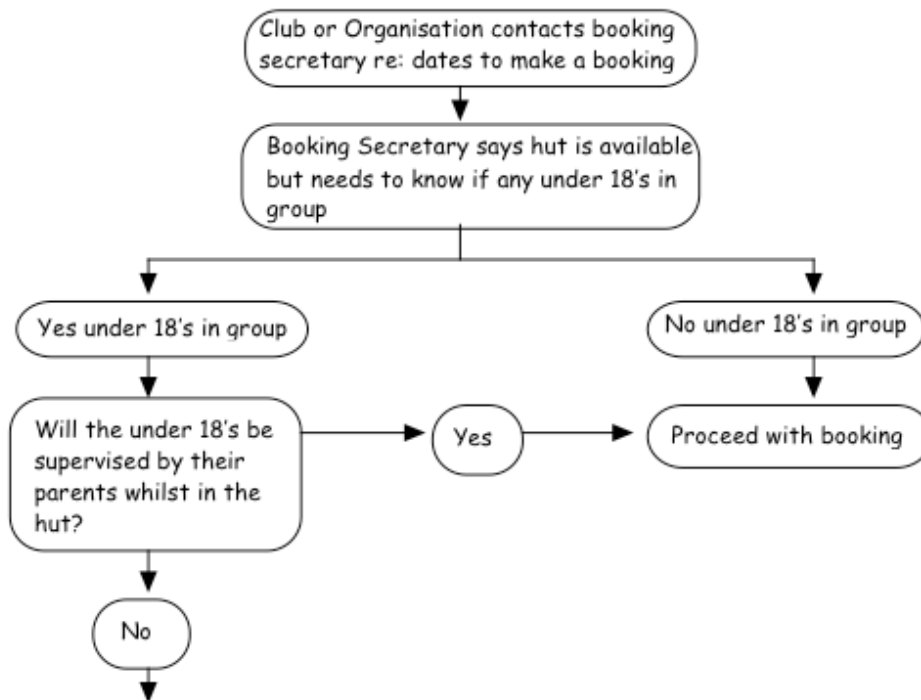
BMC Hut Warden	Mike Battye	01270 587831 or 07711 682400
Hut volunteers	Rik Battye	07857 979049
	Dominic Breen	0114 2681672 or 07976 776850
	Ross Burnage	07891 462690
Booking Secretary	Mark Stock	0114 2682337

Please remember we are all volunteers who give our time to looking after the hut. It is likely that one of us will be in to take your call if there is a problem, though if not you'll have to fend for yourselves. We don't expect to be contacted in the middle of the night unnecessarily by drunken revellers who have forgotten the lock code!

If you experience anything untoward that requires fixing, please ensure that you let Mike Battye know who will ensure it gets fixed for the next visitors.

We all hope that you have an enjoyable stay at the hut!

The Don Whillans Memorial Hut - Booking Procedure



Clubs or Organisations wishing to make a booking must:

1. confirm in writing that it has adopted The BMC's Child Protection Policy or that it has its own equally robust Child Protection Policy;

2. confirm it has appointed a Club Youth Co-ordinator, sometimes called a Club Child Protection Co-ordinator and supply the name of this person;

3. Be advised that due to the layout of the hut, only single sex groups (either male or female) under 18's can use the hut. This is so that there is no mixed sleeping accommodation for under 18's and that under 18's do not sleep in the same room as adults (except with their parents).

Only when confirmation of this has been received in writing will a booking be confirmed.

m.h.1.4.06.